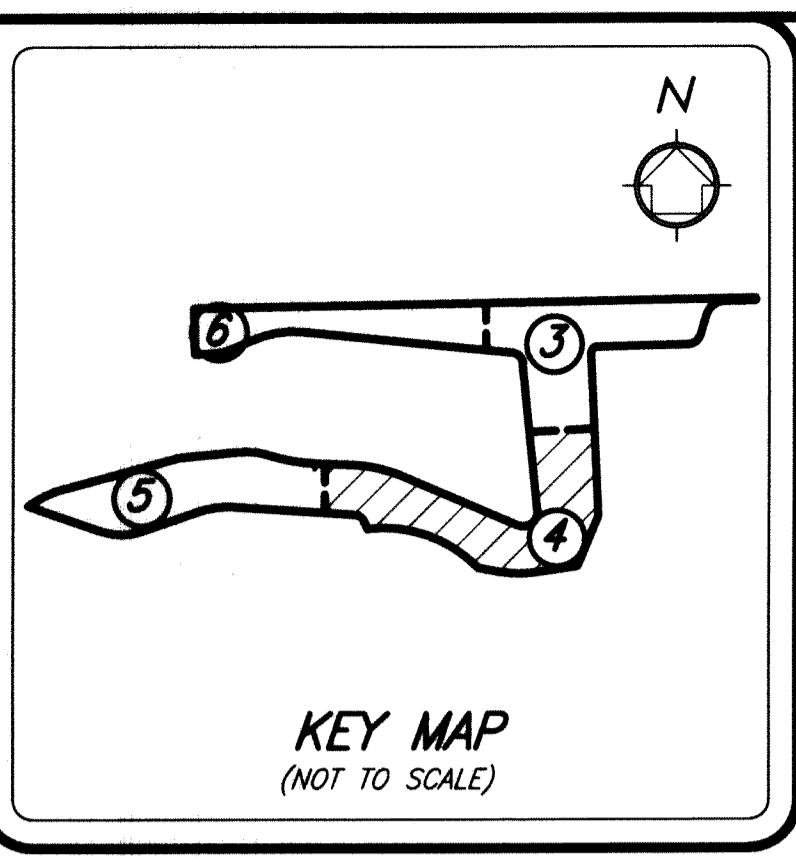


BOCA DEL MAR PUD - BARRINGTON COVE AT MIZNER VILLAGE

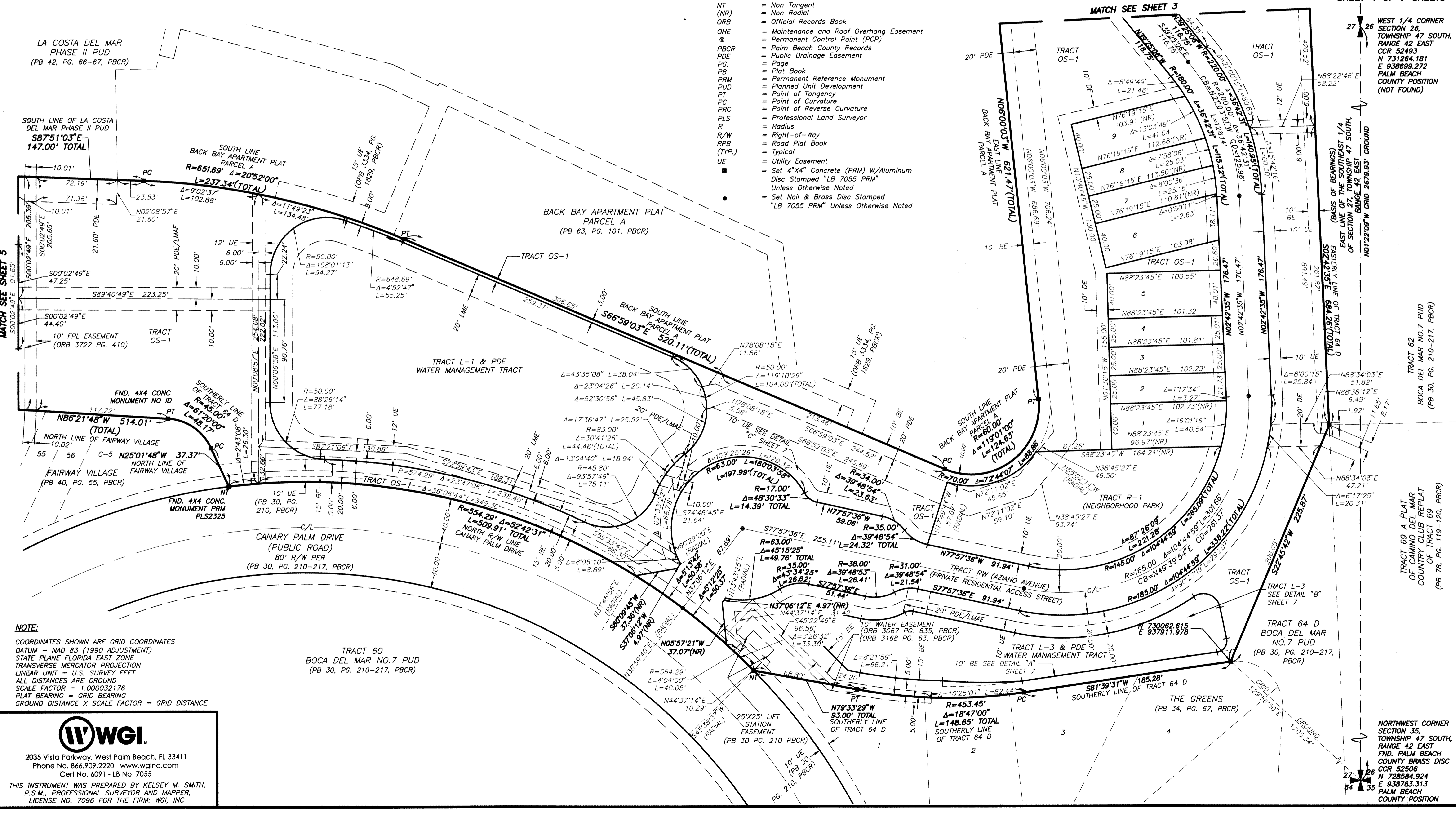
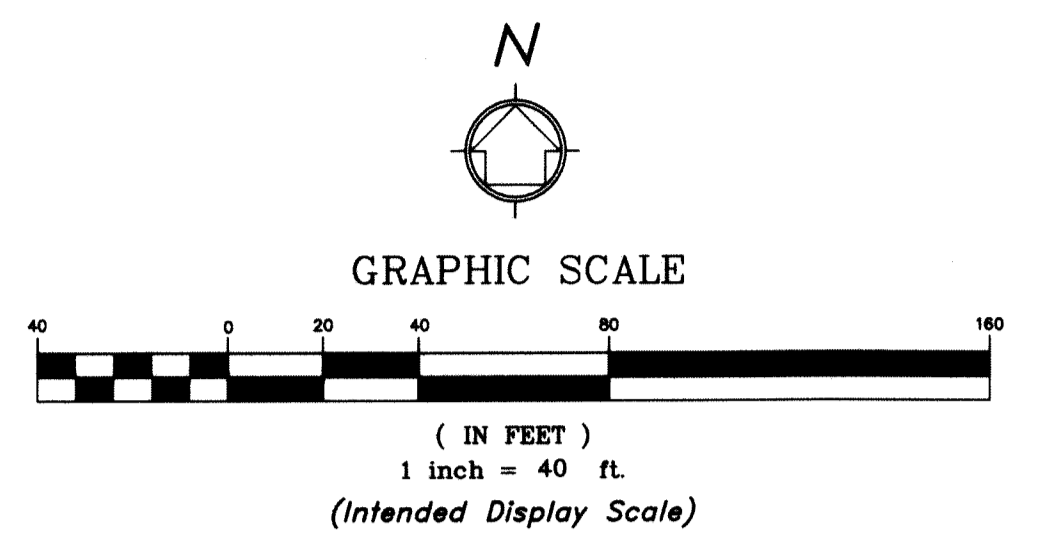
BEING A REPLAT OF A PORTION OF TRACT 64 D, BOCA DEL MAR NO. 7 PUD, PLAT BOOK 30, PAGES 210 THROUGH 217 INCLUSIVE, OF THE PUBLIC RECORDS, PALM BEACH COUNTY, FLORIDA. LYING AND SITUATE IN SECTION 27, TOWNSHIP 47 SOUTH, RANGE 42 EAST, PALM BEACH COUNTY, FLORIDA.

62

SHEET 4 OF 7 SHEETS



- LEGEND**
- BE = Buffer
 - C/L = Center Line
 - CCR = Certified Corner Record
 - CONC. = Concrete
 - CB = Cord Bearing
 - CD = Cord Distance
 - Δ = Delta (Central Angle)
 - DE = Drainage Easement
 - FPL = Florida Power & Light
 - FND. = Found
 - LME = Lake Maintenance Easement
 - LMAE = Lake Maintenance Access Easement
 - LWDD = Lake Worth Drainage District
 - L = Length of Arc
 - LB = Licensed Business
 - NAD = North American Datum
 - NO. = Number
 - NT = Non Tangent
 - (NR) = Non Radial
 - ORB = Official Records Book
 - OHE = Maintenance and Roof Overhang Easement
 - PCP = Permanent Control Point (PCP)
 - PBCR = Palm Beach County Records
 - PG. = Page
 - PB = Plat Book
 - PRM = Permanent Reference Monument
 - PUD = Planned Unit Development
 - PT = Point of Tangency
 - PC = Point of Curvature
 - PRC = Point of Reverse Curvature
 - PLS = Professional Land Surveyor
 - R = Radius
 - R/W = Right-of-Way
 - RPB = Road Plat Book
 - (TYP.) = Typical
 - UE = Utility Easement
 - = Set 4"X4" Concrete (PRM) W/Aluminum Disc Stamped "LB 7055 PRM" Unless Otherwise Noted
 - = Set Nail & Brass Disc Stamped "LB 7055 PRM" Unless Otherwise Noted



NOTE:
COORDINATES SHOWN ARE GRID COORDINATES
DATUM - NAD 83 (1990 ADJUSTMENT)
STATE PLANE FLORIDA EAST ZONE
TRANSVERSE MERCATOR PROJECTION
LINEAR UNIT = U.S. SURVEY FEET
ALL DISTANCES ARE GROUND
SCALE FACTOR = 1.000032176
PLAT BEARING = GRID BEARING
GROUND DISTANCE X SCALE FACTOR = GRID DISTANCE

2035 Vista Parkway, West Palm Beach, FL 33411
Phone No. 866.909.2220 www.wginc.com
Cert No. 6091 - LB No. 7055

THIS INSTRUMENT WAS PREPARED BY KELSEY M. SMITH,
P.S.M., PROFESSIONAL SURVEYOR AND MAPPER,
LICENSE NO. 7096 FOR THE FIRM: WGI, INC.

NORTHWEST CORNER
SECTION 35,
TOWNSHIP 47 SOUTH,
RANGE 42 EAST
FND. PALM BEACH
COUNTY BRASS DISC
CCR 52506
N 728584.924
E 938763.313
PALM BEACH
COUNTY POSITION